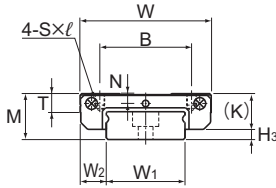
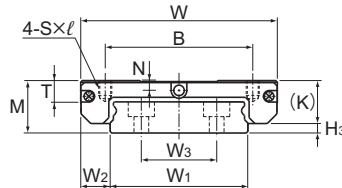


## Models SRS-WS, SRS-WM and SRS-WN



Models SRS7W, 9W, 12W



Model SRS15W

Model No.	Outer dimensions			LM block dimensions							H <sub>3</sub>
	Height	Width	Length	B	C	S × ℓ	L <sub>1</sub>	T	K	N	
	M	W	L	B	C	S × ℓ	L <sub>1</sub>	T	K	N	
SRS 7WS SRS 7WGS	9	25	22.5	19	—	M3×2.8	11.9	3.8	7.2	1.8	1.8
SRS 7WM SRS 7WGM	9	25	31	19	10	M3×2.8	20.4	3.8	7.2	1.8	1.8
SRS 7WN SRS 7WGN	9	25	40.9	19	17	M3×2.8	30.3	3.8	7.2	1.8	1.8
SRS 9WS SRS 9WGS	12	30	26.5	21	—	M3×2.8	14.5	4.9	9.1	2.3	2.9
SRS 9WM SRS 9WGM	12	30	39	21	12	M3×2.8	27	4.9	9.1	2.3	2.9
SRS 9WN SRS 9WGN	12	30	50.7	23	24	M3×2.8	38.7	4.9	9.1	2.3	2.9
SRS 12WS SRS 12WGS	14	40	30.5	28	—	M3×3.5	16.9	5.7	11	3	3
SRS 12WM SRS 12WGM	14	40	44.5	28	15	M3×3.5	30.9	5.7	11	3	3
SRS 12WN SRS 12WGN	14	40	59.5	28	28	M3×3.5	45.9	5.7	11	3	3
SRS 15WS SRS 15WGS	16	60	41.5	45	—	M4×4.5	24.9	6.5	13.3	3	2.7
SRS 15WM SRS 15WGM	16	60	55.5	45	20	M4×4.5	38.9	6.5	13.3	3	2.7
SRS 15WN SRS 15WGN	16	60	74.5	45	35	M4×4.5	57.9	6.5	13.3	3	2.7

Note) Since stainless steel is used in the LM block, LM rail and balls, these models are highly resistant to corrosion and environment.  
The SRS-G is equipped with uncaged, full-complement bearings.

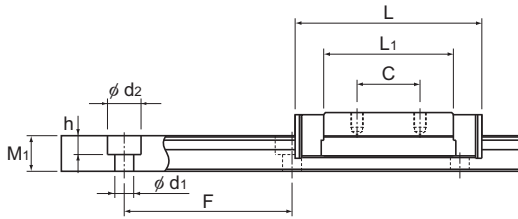
### Model number coding

<b>2</b>	<b>SRS15WM</b>	<b>QZ</b>	<b>UU</b>	<b>C1</b>	<b>+550L</b>	<b>P</b>	<b>M</b>	<b>-II</b>
Model number	With QZ Lubricator	Contamination protection accessory symbol (*1)	LM rail length (in mm)	Stainless steel LM rail	Symbol for No. of rails used on the same plane (*4)	Accuracy symbol (*3)	Normal grade (No Symbol)/High accuracy grade (H)	Precision grade (P)
No. of LM blocks used on the same rail		Radial clearance symbol (*2) Normal (No symbol)/Light preload (C1)						

(\*1) See contamination protection accessory on **A1-494**. (\*2) See **A1-70**. (\*3) See **A1-82**. (\*4) See **A1-13**.

Note) This model number indicates that a single-rail unit constitutes one set. (i.e., required number of sets when 2 rails are used in parallel is 2 at a minimum.)

Those models equipped with QZ Lubricator cannot have a grease nipple. When desiring a grease nipple for a model attached with QZ, contact THK.



Unit: mm

LM rail dimensions							Basic load rating		Static permissible moment N·m*					Mass	
Width			Height	Pitch		Length*	C	C <sub>0</sub>	M <sub>A</sub>		M <sub>B</sub>		M <sub>C</sub>	LM block	LM rail
W <sub>1</sub>	W <sub>2</sub>	W <sub>3</sub>	M <sub>1</sub>	F	d <sub>1</sub> × d <sub>2</sub> × h	Max	kN	kN	1 block	Double blocks	1 block	Double blocks	1 block	kg	kg/m
14 <sup>0</sup> <sub>-0.02</sub>	5.5	—	5.2	30	3.5×6×3.2	480	1.38 1.06	1.35 1.35	2.89 19.6	19.6 20.0	3.32 2.96	22.7 23.1	9.95 9.95	0.011	0.56
14 <sup>0</sup> <sub>-0.02</sub>	5.5	—	5.2	30	3.5×6×3.2	480	2.01 1.63	1.94 2.51	6.47 8.87	36.4 51.5	7.71 10.2	42.3 59.5	14.33 20.3	0.018	0.56
14 <sup>0</sup> <sub>-0.02</sub>	5.5	—	5.2	30	3.5×6×3.2	480	2.56 2.12	3.28 3.66	15.0 16.6	78.9 87.7	17.4 19.2	91.2 101	24.2 27	0.026	0.56
18 <sup>0</sup> <sub>-0.02</sub>	6	—	7.5	30	3.5×6×4.5	1430	2.03 1.73	1.84 2.14	4.49 5.15	32.1 36.9	5.15 5.92	38.9 42.6	17.4 20.2	0.018	1.01
18 <sup>0</sup> <sub>-0.02</sub>	6	—	7.5	30	3.5×6×4.5	1430	3.29 2.67	3.34 3.35	14.0 13.9	78.6 69.7	16.2 16.6	91.0 96.7	31.5 31.7	0.031	1.01
18 <sup>0</sup> <sub>-0.02</sub>	6	—	7.5	30	3.5×6×4.5	1430	4.20 3.48	4.37 5.81	25.1 33.2	130 172	29.1 40	151 208	41.3 54.9	0.049	1.01
24 <sup>0</sup> <sub>-0.02</sub>	8	—	8.5	40	4.5×8×4.5	1600	3.58 3.05	3.15 3.68	9.77 11.1	63 72.6	9.77 11.1	63 72.6	39.5 46.2	0.034	1.52
24 <sup>0</sup> <sub>-0.02</sub>	8	—	8.5	40	4.5×8×4.5	1600	5.48 4.46	5.3 5.32	26.4 25.7	143 146	26.4 25.7	143 146	66.5 66.8	0.055	1.52
24 <sup>0</sup> <sub>-0.02</sub>	8	—	8.5	40	4.5×8×4.5	1600	7.13 5.93	7.07 9.46	49.2 64.7	249 332	49.2 64.7	249 332	88.7 119	0.091	1.52
42 <sup>0</sup> <sub>-0.02</sub>	9	23	9.5	40	4.5×8×4.5	1800	6.64 5.59	5.94 6.78	25.4 29	158 178	25.4 29	158 178	123 140	0.087	2.87
42 <sup>0</sup> <sub>-0.02</sub>	9	23	9.5	40	4.5×8×4.5	1800	9.12 7.43	8.55 8.59	51.2 52.7	290 293	51.2 52.7	290 293	176 178	0.13	2.87
42 <sup>0</sup> <sub>-0.02</sub>	9	23	9.5	40	4.5×8×4.5	1800	12.4 9.87	12.1 15.3	106 133	532 671	106 133	532 671	250 317	0.201	2.87

Note) If a grease nipple is required, please specify "with grease nipple" when ordering. (This option is available for models SRS15, SRS15W, SRS20, and SRS25.)

If an oil hole is desired, please specify "with oil hole" when ordering. (This option is available for models SRS7, SRS7W, SRS9W, SRS12, and SRS12W.)

The SRS-G, equipped with uncaged, full-complement bearings, comes with an oil hole or grease nipple.

The maximum length under "Length\*" indicates the standard maximum length of an LM rail. (See **A1-160**.)

Static permissible moment\* 1 block: static permissible moment value with 1 LMblock

Double blocks: static permissible moment value with 2 blocks closely contacting with each other

- Reference bolt tightening torque when mounting an LM block for model SRS 7W is shown in the table below.

Reference tightening torque

Model No.	Model No. of screw	Screw depth (mm)	Reference tightening torque (N·m)*
SRS 7W	M3	2.8	0.4

\* Tightening above the tightening torque affects accuracy.  
Be sure to tighten at or below the defined tightening torque.