

Planetary gearboxes for mobile applications

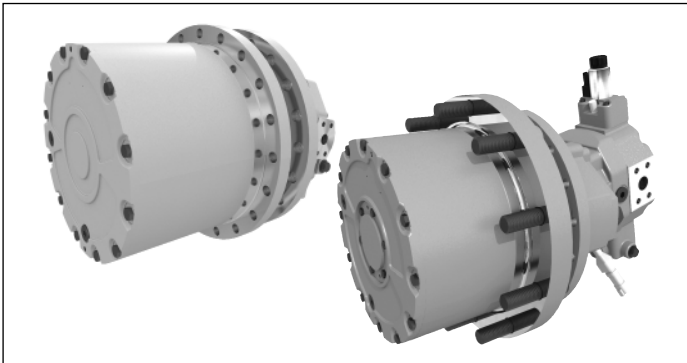
HYDROTRAC GFT 8000

Series 40

RE 77117

Edition: 02.2016

Replaces: 08.2015



- ▶ Sizes 8110 to 8190
- ▶ Output torques between 10000 and 130000 Nm

Features

- ▶ Compact, space-saving two- or three-stage planetary gearbox
- ▶ Robust design
- ▶ Integrated static multiple-disk parking brake
- ▶ Several sizes also with dynamic brake
- ▶ Assembly of variable plug-in and fixed displacement plug-in motors different series possible
- ▶ For open and closed circuits
- ▶ Easy assembly
- ▶ Disconnect mechanism (optional)
- ▶ Wheel studs (optional)

Content

Description	2
Technical data	2
Application conditions	2
Dimensions	3
Planetary gearboxes for mobile units	4

Additional information at:
www.boschrexroth.com/gears



Description

The hydrostatic compact drive series 40 consists of a two- or three-stage planetary gearbox, which - in combination with a hydraulic axial piston motor - builds a space-saving drive unit. The complete unit is used as a drive component for wheel- or chain driven vehicles and other mobile applications.

Application conditions

The planetary gearboxes are designed for use in environmental temperatures between -25°C and +40°C. Environmental factors such as salt water, salt air, sand, dust, pressure, severe shocks, extreme shock loads and environmental temperatures, aggressive media, etc. affect the function. Such influences must be pre-announced in order for a secure gearbox design.

Technical data

Size GFT	Nominal output torque Nm	Ratio <i>i</i>	Brake torque static Nm	Brake torque dynamic Nm	Appr. weight without motor kg	Compatible hydraulic motors
8110 E	10000	25.2 • 39.2 • 47.1 • 54.7	²⁾	-	55	A2FE 28 • 32 / A10FE 28 • 45 ⁴⁾ / A6VE 28 / A10VE 28 • 45 ⁴⁾
8120 E ¹⁾	15000	19.0 • 24.0 • 32.1 • 36.4 • 39.1	²⁾	³⁾	80	A2FE 45 • 56 • 63 ⁴⁾ / A6VE 55 • 60
8130 E ¹⁾	20000	26.0 • 32.3 • 39.2 • 50.6	²⁾	³⁾	85	A2FE 45 • 56 • 63 • 80 • 90 / A6VE 55 • 60 • 80 • 85
8140 F	30000	90.4 • 102.8 • 120.4 • 137.1	²⁾	-	95	A2FE 45 • 56 • 63 ⁴⁾ / A6VE 55 • 60
8150 E ¹⁾	42000	32.3 • 35.4 • 41.1 • 50.6	²⁾	³⁾	200	A2FE 80 • 90 / A6VE 80 • 85 • 107 • 115 • 160 • 170
8160 F	52000	73.8 • 100.5 • 116.1 • 138.9	²⁾	-	240	A2FE 80 • 90 • 107 • 125 / A6VE 80 • 85 • 107 • 115
8170 F	70000	95.0 • 107.3 • 124.1	²⁾	-	250	A2FE 107 • 125 / A6VE 107 • 115
8180 E	70000	44.1 • 50.6 • 54.7	²⁾	-	330	A6VE 160 • 170
8190 F	130000	93.8 • 121.1 • 140.1 • 167.9	²⁾	-	460	A2FE 107 • 125 • 160 • 180 / A6VE 107 • 115 • 160 • 170

Other design variants on request

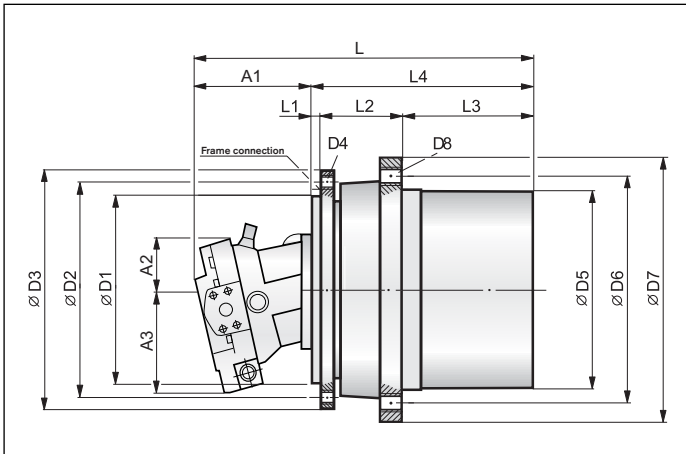
1) Size also available with dynamic brake (not technical combinable with all in the size listed hydraulic motors)

2) Depending on motor size

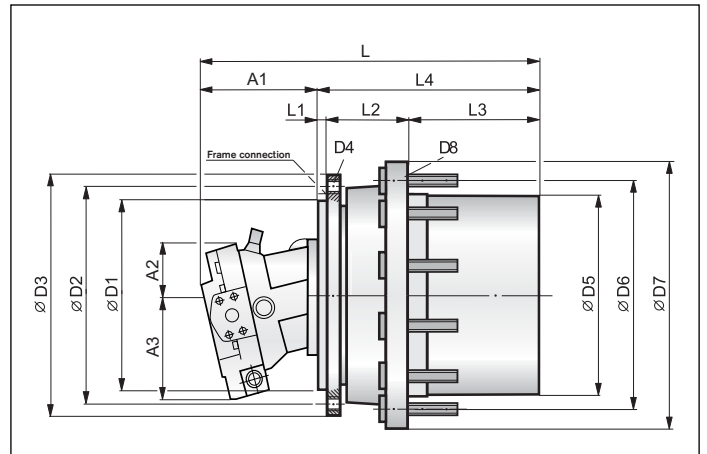
3) Device-specific

4) On request

Dimensions



Version T (with thread hole)



Version W (with wheel stud)

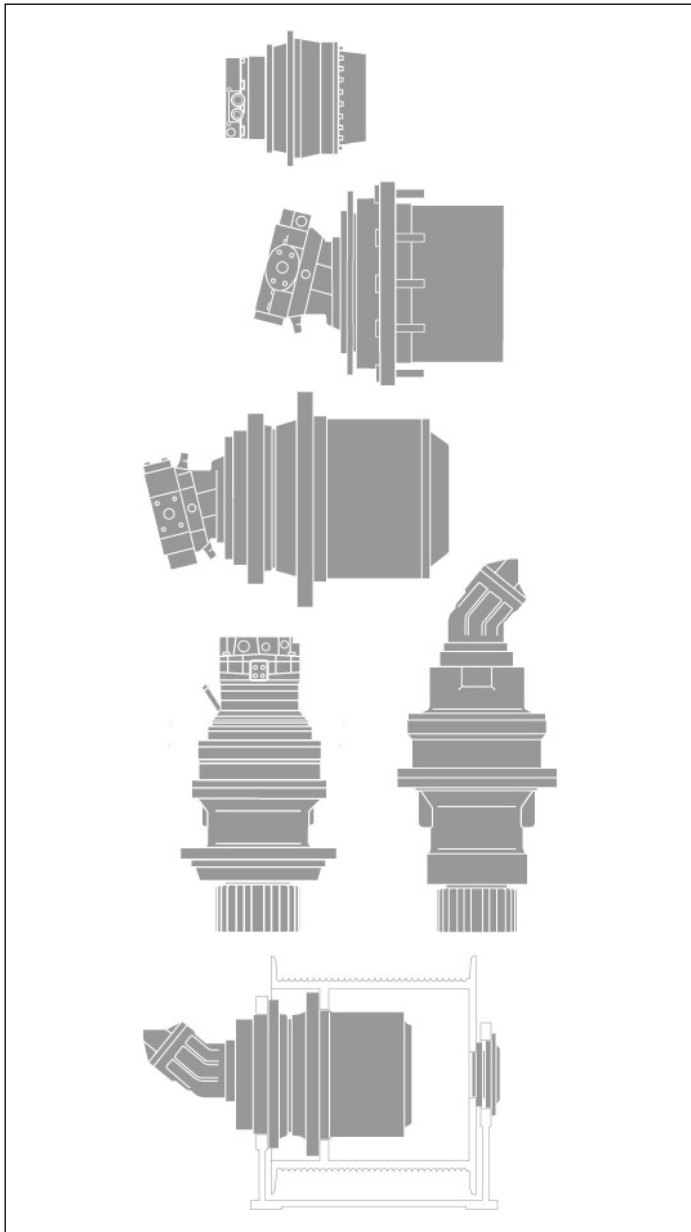
Size GFT	Version	D1	D2	D3	D4	D5	D6	D7	D8	L	L1	L2	L3	L4	A1	A2	A3
8110 E	T	210	244	268	12 x M14	230	260	284	16 x M16	¹⁾	15	60	166	241	²⁾	²⁾	²⁾
8110 E	W	in preparation															
8120 E	T	240	275	300	18 x M16	270	305	335	16 x M16	¹⁾	14	75	163.5	252.5	²⁾	²⁾	²⁾
8120 E	W	250	305	330	23 x M16	260	300	335	10 x M22 x 1.5	¹⁾	14	82	156.5	252.5	²⁾	²⁾	²⁾
8120 E	W	270	300	325	17 x M16	280	335	372	10 x M22 x 1.5	¹⁾	14	90	148.5	252.5	²⁾	²⁾	²⁾
8130 E	T	250	290	320	16 x M20	280	305	330	16 x M16	¹⁾	14	82	166	262	²⁾	²⁾	²⁾
8130 E	W	270	300	325	17 x M16	280	335	372	10 x M22 x 1.5	¹⁾	14	90	158	262	²⁾	²⁾	²⁾
8140 F	T	240	285	320	20 x M18	280	305	330	20 x M16	¹⁾	14	82	195.5	291.5	²⁾	²⁾	²⁾
8150 E	T	330	370	410	20 x M20	360	400	440	16 x M20	¹⁾	12	90	252.5	354.5	²⁾	²⁾	²⁾
8150 E	W	330	370	410	19 x M20	365	415	455	12 x M22 x 1.5	¹⁾	12	90	252.5	354.5	²⁾	²⁾	²⁾
8160 F	T	330	370	410	20 x M20	360	400	440	16 x M20	¹⁾	14	114	254	382	²⁾	²⁾	²⁾
8170 F	T	330	370	410	20 x M20 x 1.5	400	450	490	20 x M20 x 1.5	¹⁾	14	90	284	388	²⁾	²⁾	²⁾
8180 E	T	380	430	480	20 x M24	430	480	520	24 x M24	¹⁾	14.5	148	229.5	392	²⁾	²⁾	²⁾
8190 F	T	420	460	500	24 x M24	460	500	540	36 x M18 x 1.5	¹⁾	21.5	165	294	480.5	²⁾	²⁾	²⁾

Other dimensions on request

¹⁾ Depending on motor size

²⁾ Depending on motor size and control device

Planetary gearboxes for mobile units



Hydrostatic travel drives

- HYDROTRAC GFT
For fixed- or variable-displacement motors
Output torques between 9,5 and 580 kNm
Data sheet RE 77110
- HYDROTRAC GFT 2000
Series 30
Output torques between 13,5 and 42,5 kNm
Data sheet RE 77116
- HYDROTRAC GFT 8000
Series 30
Output torques between 20 and 30 kNm
Data sheet RE 77128
- HYDROTRAC GFT 8000
Series 40
Output torques between 10 and 130 kNm
Data sheet RE 77117
- HYDROTRAC GFT 45 T2/T3
Output torques max. 45 kNm
Data sheet RE 77115

Hydrostatic swing drives

- MOBILEX GFB
For fixed- or variable-displacement motors
Output torques between 4 and 68,3 kNm
Data sheet RE 77201
- MOBILEX GFB 2000
Series 20
Output torques between 4 and 14,5 kNm
Data sheet RE 77206

Hydrostatic winch gears

- MOBILEX GFT-W
For fixed- or variable-displacement motors
Output torques between 14 and 325 kNm
Data sheet RE 77502

Bosch Rexroth AG

Transmission Unit
 Nortkirchenstr. 53
 44263 Dortmund, Germany
 Phone +49 231 22819-5
 info.gears@boschrexroth.de
 www.boschrexroth.com/gears

© This document, as well as the data, specifications and other informations set forth in it, are exclusive property of Bosch Rexroth AG. Without their consent it may not be reproduced or given to third parties. The data specified above only serve to describe the product. No statement concerning a certain condition or suitability for a certain application can be derived from our information. The given information does not release the user from the obligation of own judgement and verification. It must be remembered that our products are subject to a natural process of wear and aging.